

Structural Stock List **2012**



orange is good



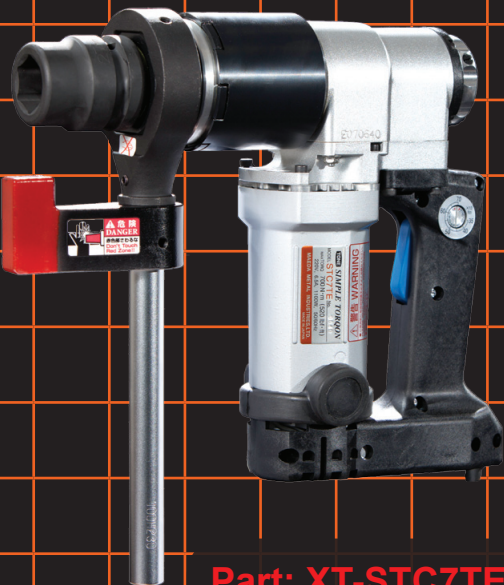
Structural Bolting
made easy and
accurate with the:

Hobson AS1252
Structural Assembly.

Squirter® Washer
Direct Tension Indicator.

TONE®
Electric Torque Control Wrench.

**TONE® Electric
Torque Control Wrench**



Part: XT-STC7TE

Featuring:

- ✓ 2 x Safety Reaction Arms
- ✓ L-Shape Arm + Long Bar Arm 230mm
- ✓ Light Weight (7TE 6.2kg, 11TE 9.0kg)
- ✓ Non Impacting
- ✓ Low Noise
- ✓ Automatic Shut-off at Preset Torque
- ✓ Torque Range 7TE 350-700Nm
- ✓ Torque Range 11TE 500-1100Nm
- ✓ 1" Square Drive (Both Models)



Part: XT-STC11TE

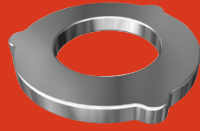


Sockets not included



AS1252 Structural

Hot Dip Galvanise
Mechanical Galvanise
Plain



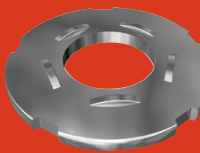
STRUCTURAL WASHER 35-45HRC AS1252

Part	Size	OD	ID	Thk	Pack	Pack Wgt	Stock	
		(mm)	(mm)	(mm)		(Kg)	HDG	PLN
WRST?M12	M12	25.7	14.0	3.1	1000	10.06	✓	✓
WRST?M16	M16	32.4	18.0	3.1	800	12.27	✓	✓
WRST?M20	M20	37.4	21.0	3.1	500	10.47	✓	✓
WRST?M22	M22	42.4	24.0	3.4	350	8.06	✓	✓
WRST?M24	M24	48.4	26.0	3.4	350	15.75	✓	✓
WRSTGM27	M27	54.1	30.0	3.4	420	19.86	✓	
WRST?M30	M30	58.1	33.0	3.4	250	13.36	✓	✓
WRST?M36	M36	70.1	39.0	3.4	200	22.00	✓	✓



SQUIRTER® DTI (DIRECT TENSION INDICATOR) WASHER ASTM F959M / MECHANICAL GALVANISE

Part	Size	OD	ID	Thk	No. of Bumps	Keg	Keg Wgt	Stock
		(mm)	(mm)	(mm)			(Kg)	
WDSTGM16	M16	36.0	17.0	3.4	4	1250	22.7	✓
WDSTGM20	M20	46.0	21.0	3.8	5	750	27.2	✓
WDSTGM24	M24	55.0	25.0	4.4	5	450	27.2	✓
WDSTGM30	M30	68.0	32.0	4.4	7	250	27.2	✓
WDSTGM36	M36	81.0	38.0	5.0	8	175	27.2	✓
WDSTG050	1/2"	34.9	13.4	3.0	4	1750	23.8	✓
WDSTG087	7/8"	50.8	23.4	4.0	5	650	27.2	✓



LOAD INDICATOR WASHER ASTM F959M / MECHANICAL GALVANISE

Part	Size	OD	ID	Thk	No. of Bumps	Keg	Keg Wgt	Stock
		(mm)	(mm)	(mm)			(Kg)	
WISTGM16	M16	36.0	17.0	3.4	4	1250	22.7	✓
WISTGM20	M20	46.0	21.0	3.8	5	750	27.2	✓
WISTGM24	M24	55.0	25.0	4.4	5	450	27.2	✓



FEELER GAUGE

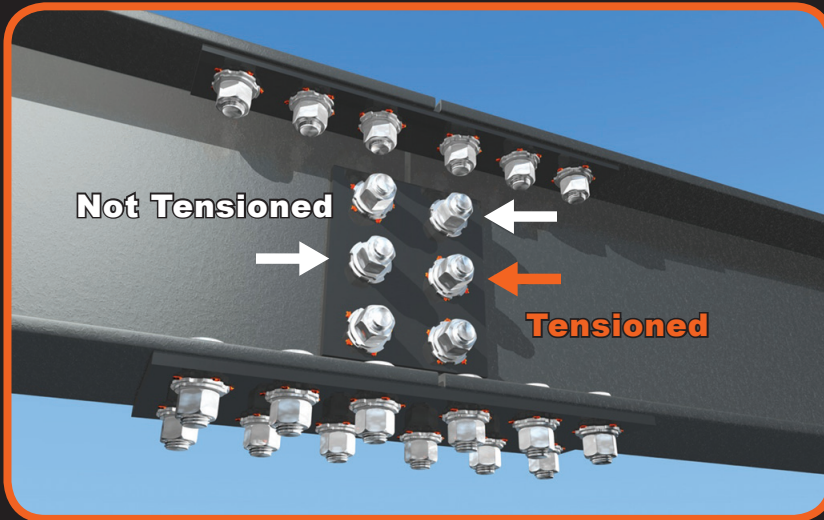
Part	Size	Pack	Pack Wgt	Stock
			(Kg)	
XGF013	0.13	10	0.01	✓

? = G: Hot Dip Galvanise (HDG) Z: Zinc Plate (Z/P) Y: Zinc Yellow Passivate (ZYP) P: Plain (PLN)

orange is good



Squirter® DTIs (Direct Tension Indicator)
Designed for AS1252 Structural Bolting.

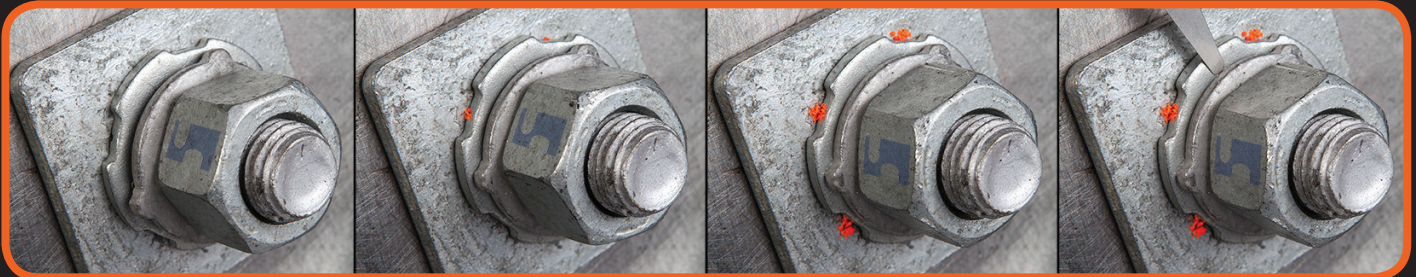


Features

- ✓ Manufactured to ASTM F959M.
- ✓ Conforms to AS4100-1990 15.4.1 (b) Direct-tensioning indication device.
- ✓ Lot trace number on each washer.
- ✓ Test Certificates available online www.hobson.com.au.
- ✓ Visual tension indication by Orange Silicone.
- ✓ Enables efficient & accurate installation of AS1252 structural assemblies.

SQUIRTER® DTIs (Direct Tension Indicator) are DTIs with a flexible silicone embedded in the depressions under the bumps. To use them, simply ... Tighten the bolt until the calibrated amount of orange silicone appears from under the DTIs squirt locations, then stop tightening. That's all there is to it.

Now you can see when the bolt assembly is tensioned correctly.



Easier & Better than Turn-of Nut

You don't have to remember to stop turning at 1/3rd, 1/2, or 2/3rds turn. No match marking necessary.

Saves Time

Enables correct tensioning as fast as the wrench can be moved to the next bolt, because the operator can see when to stop.

Safe for Inspectors

Once calibrated, inspectors can easily see the orange squirts, they don't have to climb to all the connections or carry around a torque wrench to know the connection has been completed. And instead of sampling only some of the DTIs with a feeler gage, squirter allow virtually 100% inspection.

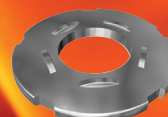
Since 1935

... because quality matters

SQUIRTER® DTIs

the best way to bolt!

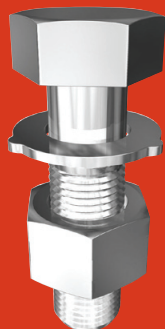
www.hobson.com.au





AS1252 Structural

Hot Dip Galvanise



STRUCTURAL ASSEMBLIES AS1252 (1983 DIMENSIONS & 1996 MECHANICAL PROPERTIES)

Part	Size	Length	Thread	Pack	Pack Wgt	Stock
		(mm)	(mm)		(Kg)	HDG
KBHSTGCM120030	M12	30	20	200	13.52	✓
KBHSTGCM120035	M12	35	25	200	14.52	✓
KBHSTGCM120040	M12	40	30	150	15.32	✓
KBHSTGCM120045	M12	45	30	150	12.24	✓
KBHSTGCM120050	M12	50	30	150	12.84	✓
KBHSTGCM120060	M12	60	30	150	13.89	✓
KBHSTGCM120065	M12	65	30	150	13.92	✓
KBHSTGCM120070	M12	70	30	150	13.95	✓
KBHSTGCM120075	M12	75	30	150	13.99	✓
KBHSTGCM120080	M12	80	30	150	14.01	✓
KBHSTGCM120090	M12	90	30	100	13.89	✓
KBHSTGCM120100	M12	100	30	100	14.25	✓
KBHSTGCM120120	M12	120	36	75	12.82	✓
KBHSTGCM120150	M12	150	36	75	15.02	✓
KBHSTGCM120180	M12	180	36	50	12.02	✓
KBHSTGCM120200	M12	200	36	50	13.05	✓

? = G: Hot Dip Galvanise (HDG) Z: Zinc Plate (Z/P) Y: Zinc Yellow Passivate (ZYP) P: Plain (PLN)

AS1252 Structural

Hot Dip Galvanise



STRUCTURAL ASSEMBLIES AS1252 (1983 DIMENSIONS & 1996 MECHANICAL PROPERTIES)

Part	Size	Length	Thread	Pack	Pack Wgt	Stock
		(mm)	(mm)		(Kg)	HDG
KBHSTGCM160040	M16	40	26	100	18.45	✓
KBHSTGCM160045	M16	45	31	100	19.00	✓
KBHSTGCM160050	M16	50	36	100	19.00	✓
KBHSTGCM160055	M16	55	38	100	20.00	✓
KBHSTGCM160060	M16	60	38	100	21.45	✓
KBHSTGCM160065	M16	65	38	75	15.75	✓
KBHSTGCM160070	M16	70	38	75	16.50	✓
KBHSTGCM160075	M16	75	38	75	17.25	✓
KBHSTGCM160080	M16	80	38	75	18.00	✓
KBHSTGCM160090	M16	90	38	75	19.50	✓
KBHSTGCM160100	M16	100	38	75	20.25	✓
KBHSTGCM160110	M16	110	38	50	14.85	✓
KBHSTGCM160120	M16	120	38	50	16.20	✓
KBHSTGCM160130	M16	130	44	50	16.33	✓
KBHSTGCM160140	M16	140	44	50	17.01	✓
KBHSTGCM160150	M16	150	44	50	17.85	✓
KBHSTGCM160160	M16	160	44	50	18.08	✓
KBHSTGCM160170	M16	170	44	50	19.14	✓
KBHSTGCM160180	M16	180	44	35	19.68	✓
KBHSTGCM160190	M16	190	44	35	13.55	✓
KBHSTGCM160200	M16	200	44	35	14.56	✓
KBHSTGCM160220	M16	220	57	35	15.61	✓
KBHSTGCM160240	M16	240	100	35	16.24	✓
KBHSTGCM160250	M16	250	100	35	16.80	✓
KBHSTGCM160270	M16	270	100	35	17.85	✓
KBHSTGCM160300	M16	300	100	25	13.63	✓
KBHSTGCM160350	M16	350	120	1	0.66	✓
KBHSTGCM160400	M16	400	120	1	0.75	✓
KBHSTGCM160500	M16	500	120	1	0.94	✓
KBHSTGCM160600	M16	600	120	1	1.13	✓



? = G: Hot Dip Galvanise (HDG) Z: Zinc Plate (Z/P) Y: Zinc Yellow Passivate (ZYP) P: Plain (PLN)

Quality Fasteners Since 1935





HIGH-TENSILE

AS1252 Structural

Hot Dip Galvanise



STRUCTURAL ASSEMBLIES

AS1252 (1983 DIMENSIONS & 1996 MECHANICAL PROPERTIES)

Part	Size	Length	Thread	Pack	Pack Wgt (Kg)	Stock HDG
		(mm)	(mm)			
KBHSTGCM200040	M20	40	23	75	21.75	✓
KBHSTGCM200045	M20	45	28	75	22.50	✓
KBHSTGCM200050	M20	50	33	50	16.00	✓
KBHSTGCM200055	M20	55	38	50	16.08	✓
KBHSTGCM200060	M20	60	43	50	16.50	✓
KBHSTGCM200065	M20	65	46	50	17.50	✓
KBHSTGCM200070	M20	70	46	50	18.00	✓
KBHSTGCM200075	M20	75	46	50	18.50	✓
KBHSTGCM200080	M20	80	46	50	19.00	✓
KBHSTGCM200085	M20	85	46	50	20.00	✓
KBHSTGCM200090	M20	90	46	40	15.77	✓
KBHSTGCM200100	M20	100	46	40	18.05	✓
KBHSTGCM200110	M20	110	46	40	18.80	✓
KBHSTGCM200120	M20	120	46	30	14.70	✓
KBHSTGCM200130	M20	130	52	30	15.00	✓
KBHSTGCM200140	M20	140	52	30	16.20	✓
KBHSTGCM200150	M20	150	52	30	16.20	✓
KBHSTGCM200160	M20	160	52	30	17.25	✓
KBHSTGCM200180	M20	180	52	25	15.63	✓
KBHSTGCM200190	M20	190	52	25	15.68	✓
KBHSTGCM200200	M20	200	52	25	16.30	✓
KBHSTGCM200210	M20	210	65	25	16.88	✓
KBHSTGCM200220	M20	220	65	25	17.45	✓
KBHSTGCM200240	M20	240	65	20	14.92	✓
KBHSTGCM200250	M20	250	100	20	15.32	✓
KBHSTGCM200275	M20	275	100	20	16.52	✓
KBHSTGCM200300	M20	300	100	15	13.11	✓
KBHSTGCM200350	M20	350	120	1	1.05	✓
KBHSTGCM200400	M20	400	120	1	1.15	✓
KBHSTGCM200500	M20	500	120	1	1.44	✓
KBHSTGCM200600	M20	600	120	1	1.74	✓

? = G: Hot Dip Galvanise (HDG) Z: Zinc Plate (Z/P) Y: Zinc Yellow Passivate (ZYP) P: Plain (PLN)

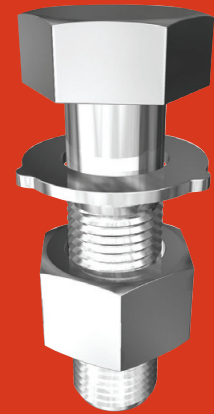
AS1252 Structural

Hot Dip Galvanise



STRUCTURAL ASSEMBLIES AS1252 (1983 DIMENSIONS & 1996 MECHANICAL PROPERTIES)

Part	Size	Length	Thread	Pack	Pack Wgt	Stock
		(mm)	(mm)		(Kg)	HDG
KBHSTGCM240050	M24	50	29	30	17.10	✓
KBHSTGCM240055	M24	55	34	30	17.70	✓
KBHSTGCM240060	M24	60	39	30	18.00	✓
KBHSTGCM240065	M24	65	44	30	18.60	✓
KBHSTGCM240070	M24	70	49	30	18.90	✓
KBHSTGCM240075	M24	75	54	30	19.50	✓
KBHSTGCM240080	M24	80	54	30	19.80	✓
KBHSTGCM240085	M24	85	54	30	20.00	✓
KBHSTGCM240090	M24	90	54	25	17.50	✓
KBHSTGCM240100	M24	100	54	25	18.10	✓
KBHSTGCM240110	M24	110	54	20	15.40	✓
KBHSTGCM240120	M24	120	54	20	16.20	✓
KBHSTGCM240130	M24	130	60	20	16.80	✓
KBHSTGCM240140	M24	140	60	20	17.60	✓
KBHSTGCM240150	M24	150	60	20	18.20	✓
KBHSTGCM240160	M24	160	60	20	18.50	✓
KBHSTGCM240170	M24	170	60	20	19.60	✓
KBHSTGCM240180	M24	180	60	15	14.90	✓
KBHSTGCM240200	M24	200	60	15	15.63	✓
KBHSTGCM240210	M24	210	73	15	16.35	✓
KBHSTGCM240220	M24	220	73	15	17.18	✓
KBHSTGCM240230	M24	230	73	15	17.96	✓
KBHSTGCM240250	M24	250	73	15	19.52	✓
KBHSTGCM240260	M24	260	120	15	19.92	✓
KBHSTGCM240280	M24	280	120	15	20.75	✓
KBHSTGCM240300	M24	300	120	10	13.70	✓
KBHSTGCM240330	M24	330	120	1	1.45	✓
KBHSTGCM240350	M24	350	120	1	1.53	✓
KBHSTGCM240390	M24	390	120	1	1.69	✓
KBHSTGCM240400	M24	400	120	1	1.77	✓
KBHSTGCM240415	M24	415	120	1	1.82	✓
KBHSTGCM240450	M24	450	120	1	1.95	✓
KBHSTGCM240500	M24	500	120	1	2.18	✓
KBHSTGCM240550	M24	550	120	1	2.50	✓
KBHSTGCM240600	M24	600	120	1	2.72	✓



? = G: Hot Dip Galvanise (HDG) Z: Zinc Plate (Z/P) Y: Zinc Yellow Passivate (ZYP) P: Plain (PLN)

Quality Fasteners Since 1935

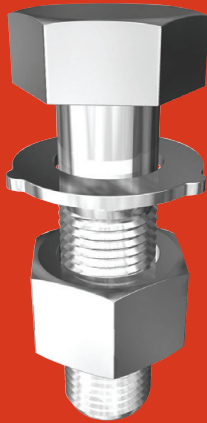




HIGH-TENSILE

AS1252 Structural

Hot Dip Galvanise



STRUCTURAL ASSEMBLIES

AS1252 (1983 DIMENSIONS & 1996 MECHANICAL PROPERTIES)

Part	Size	Length	Thread	Pack	Pack Wgt (Kg)	Stock HDG
		(mm)	(mm)			
KBHSTGCM300075	M30	75	50	15	17.40	✓
KBHSTGCM300080	M30	80	55	15	17.40	✓
KBHSTGCM300085	M30	85	60	15	18.00	✓
KBHSTGCM300090	M30	90	65	15	18.45	✓
KBHSTGCM300100	M30	100	66	15	19.20	✓
KBHSTGCM300110	M30	110	66	10	12.59	✓
KBHSTGCM300120	M30	120	66	10	13.09	✓
KBHSTGCM300130	M30	130	72	10	14.60	✓
KBHSTGCM300140	M30	140	72	10	14.90	✓
KBHSTGCM300150	M30	150	72	10	15.40	✓
KBHSTGCM300160	M30	160	72	10	15.90	✓
KBHSTGCM300170	M30	170	72	10	16.40	✓
KBHSTGCM300180	M30	180	72	8	13.60	✓
KBHSTGCM300190	M30	190	72	8	14.08	✓
KBHSTGCM300200	M30	200	72	8	14.56	✓
KBHSTGCM300220	M30	220	85	8	14.56	✓
KBHSTGCM300260	M30	260	85	8	16.42	✓
KBHSTGCM300280	M30	280	100	8	18.00	✓
KBHSTGCM300300	M30	300	100	1	1.82	✓
KBHSTGCM300350	M30	350	120	1	2.12	✓
KBHSTGCM300400	M30	400	120	1	2.42	✓
KBHSTGCM300500	M30	500	120	1	3.03	✓

? = G: Hot Dip Galvanise (HDG) Z: Zinc Plate (Z/P) Y: Zinc Yellow Passivate (ZYP) P: Plain (PLN)

AS1252 Structural

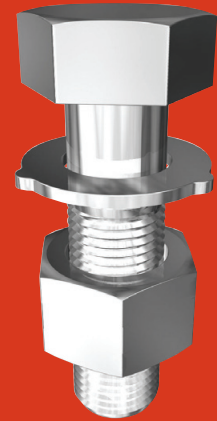
Hot Dip Galvanise



STRUCTURAL ASSEMBLIES

AS1252 (1983 DIMENSIONS & 1996 MECHANICAL PROPERTIES)

Part	Size	Length	Thread	Pack	Pack Wgt	Stock
		(mm)	(mm)		(Kg)	HDG
KBHSTGCM360090	M36	90	60	8	16.40	✓
KBHSTGCM360100	M36	100	70	8	16.88	✓
KBHSTGCM360120	M36	120	78	8	18.37	✓
KBHSTGCM360130	M36	130	84	8	17.92	✓
KBHSTGCM360140	M36	140	84	8	18.56	✓
KBHSTGCM360150	M36	150	84	8	19.16	✓
KBHSTGCM360160	M36	160	84	5	12.35	✓
KBHSTGCM360170	M36	170	84	5	12.75	✓
KBHSTGCM360180	M36	180	84	5	13.15	✓
KBHSTGCM360190	M36	190	84	5	13.35	✓
KBHSTGCM360200	M36	200	84	5	13.60	✓
KBHSTGCM360220	M36	220	97	1	2.71	✓
KBHSTGCM360240	M36	240	97	1	2.96	✓
KBHSTGCM360260	M36	260	97	1	3.20	✓
KBHSTGCM360280	M36	280	100	1	3.44	✓
KBHSTGCM360300	M36	300	100	1	3.69	✓
KBHSTGCM360400	M36	400	120	1	4.92	✓
KBHSTGCM360500	M36	500	120	1	6.15	✓



? = G: Hot Dip Galvanise (HDG) Z: Zinc Plate (Z/P) Y: Zinc Yellow Passivate (ZYP) P: Plain (PLN)

Quality Fasteners Since 1935





Technical

Thread Table

	PITCH (MM)					THREADS PER INCH				
	Size		Coarse	Fine	Extra Fine	UNC	UN8	UNF	BSW	BSF
M1.6	-	#0	0.35	-	-	-	-	80	-	-
M2	-	#1	0.4	-	-	-	-	72	-	-
-	-	#2	-	-	-	56	-	64	-	-
M2.5	-	#3	0.45	-	-	48	-	56	-	-
-	-	#4	-	-	-	40	-	48	-	-
M3	1/8"	#5	0.5	-	-	40	-	44	40	-
M3.5	-	#6	0.6	-	-	32	-	40	-	-
M4	-	#8	0.7	-	-	32	-	36	-	-
M5	3/16"	#10	0.8	-	-	24	-	32	24	32
-	-	#12	-	-	-	24	-	28	-	-
M6	1/4"	-	1	-	-	20	-	28	20	26
M8	5/16"	-	1.25	1	-	18	-	24	18	22
M10	3/8"	-	1.5	1.25	1	16	-	24	16	20
-	7/16"	-	-	-	-	14	-	20	14	18
M12	1/2"	-	1.75	1.5	1.25	13	-	20	12	16
M14	9/16"	-	2	1.5	-	12	-	18	12	16
M16	5/8"	-	2	1.5	-	11	-	18	11	14
M18	-	-	2.5	1.5	-	-	-	-	-	-
M20	3/4"	-	2.5	1.5	-	10	-	16	10	12
M22	7/8"	-	2.5	1.5	-	9	-	14	9	11
M24	1"	-	3	2	-	8	8	12 (14)	8	10
M27	1 1/8"	-	3	2	-	7	8	12	7	9
M30	1 1/4"	-	3.5	2	-	7	8	12	7	9
M33	1 3/8"	-	3.5	2	-	6	8	12	6	8
M36	1 1/2"	-	4	3	-	6	8	12	6	8
M39	1 5/8"	-	4	3	-	-	8	-	5	8
M42	-	-	4.5	-	-	-	-	-	-	-
M45	1 3/4"	-	4.5	-	-	5	8	-	5	7
M48	1 7/8"	-	5	-	-	-	8	-	-	-
M52	2"	-	5	-	-	4.5	8	-	4.5	7
M56	2 1/4"	-	5.5	-	-	4.5	8	-	4	6
M60	-	-	5.5	-	-	-	-	-	-	-
M64	2 1/2"	-	6	-	-	4	8	-	4	6
M72	2 3/4"	-	6	-	-	4	8	-	3.5	6
M80	3"	-	6	-	-	4	8	-	3.5	5
-	3 1/4"	-	-	-	-	4	8	-	3.25	5
M90	3 1/2"	-	6	-	-	4	8	-	3.25	4.5
-	3 3/4"	-	-	-	-	4	8	-	3	4.5
M100	4"	-	6	-	-	4	8	-	3	4.5

